

FIGHT THE BITE

Mosquito Control Matters

Luz Maria Robles
Public Information Officer



Sacramento-Yolo
MOSQUITO & VECTOR
CONTROL DISTRICT

Fun Facts

- Mosquitoes have been around for thousands of years and existed even before the dinosaur era.
- In the world, there are over 3,500 different mosquito species.
- Mosquitoes are attracted to our breath, sweat, body odor, warmth, perfume and hair products.
- Mosquitoes are more attracted to darker colors than to light colors.
- Mosquitoes are the worlds most dangerous insect killing thousands of people each year

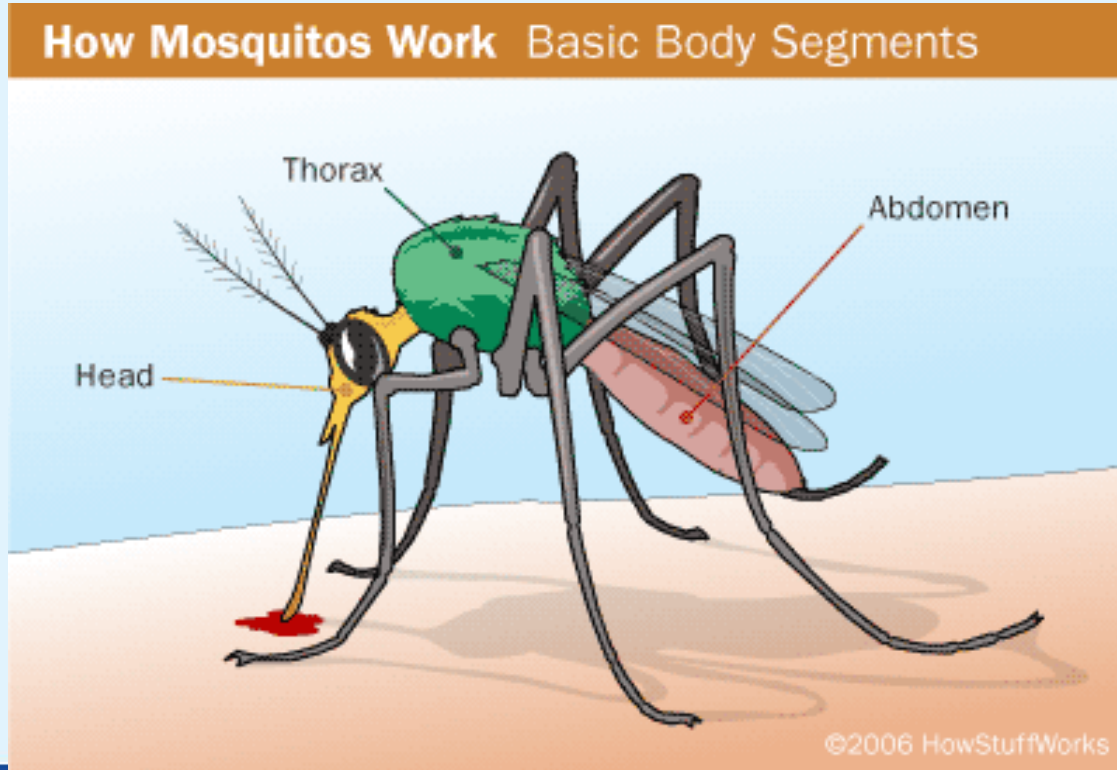


What are Mosquitoes?

A mosquito is a two-winged insect that has a long proboscis to pierce the skin and suck the blood of humans and animals.



How do Mosquitoes Work ?



Mosquito Life Cycle



Egg Raft



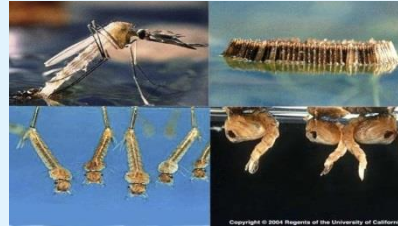
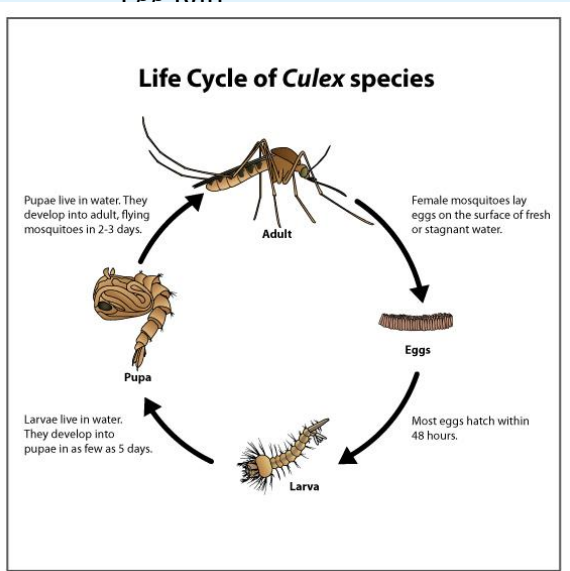
Larva



Pupa

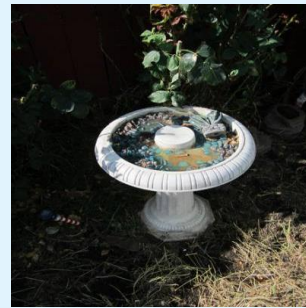


Adult Mosquito



- Mosquitoes have 4 development stages
- Immature stages need dirty water

Different Areas Where Mosquitoes Grow



Sacramento-Yolo
MOSQUITO & VECTOR
CONTROL DISTRICT

www.FIGHTtheBITE.net  

What do Female Mosquitoes do that Males don't?

Only female mosquitoes bite and feed on humans and animals

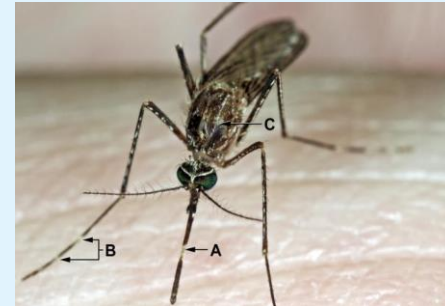


Sacramento-Yolo
MOSQUITO & VECTOR
CONTROL DISTRICT

www.FIGHTtheBITE.net  

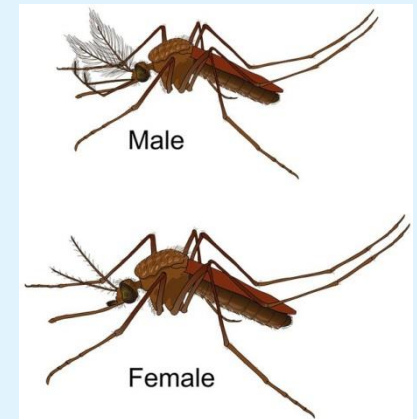
Why do female mosquitoes bite?

- Female mosquitoes need to feed on humans or animals, such as birds and horses before they can develop eggs.
- They suck blood through their proboscis



Male and Female Mosquitoes

- Females are typically larger than males
- Males live about 10 days, females can live for a month or even longer
- Males have bushy, feathery antennae
- Females can beat their wings 500 times per second, males find the females by the sound of their wings



Why does a mosquito bite itch?

A mosquito bite itches because of an allergic reaction to the saliva that the mosquito injects when it bites.



New Concern: Invasive Mosquitoes

(Yellow Fever Mosquito and Asian Tiger Mosquito)

- An aggressive day biting mosquito that prefers to bite humans.
- Small dark mosquito with clear markings on its back and banded legs
- Prefers to live near people and can live both indoors and outdoors
- Can breed in as little as 1 teaspoon of water and can complete life cycle in 7-10 days
- Eggs are laid on the side of containers and can survive even if eggs are dry



Areas where invasive mosquitoes grow



Fishy Friends



Sacramento-Yolo
MOSQUITO & VECTOR
CONTROL DISTRICT

Crane Fly

Often called mosquito eaters or mosquito hawks, these are NOT mosquitoes and they do NOT eat mosquitoes!
These are crane flies!



Mosquito Predators



**AS ADULT
MOSQUITOES
EMERGE FROM
WATER...**

**... HUNGRY
FROGS ARE
ALWAYS
WAITING!**

MOSQUITOMAGNET.COM



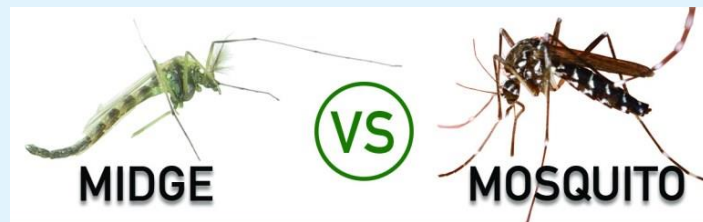
Salticidae





Sacramento-Yolo
MOSQUITO & VECTOR
CONTROL DISTRICT

www.FIGHTtheBITE.net  

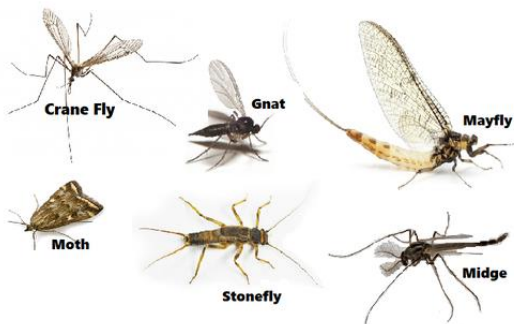
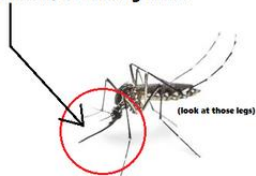
Mosquito Look Alikes



<p>"Lake Fly" Chironomid midge</p>	<p>Other Names</p> <p>"Minnesota State Bird"</p>
<p>Larvae develop in mud near the bottom of lakes and ponds.</p>	<p>Larval Life</p> <p>Larvae develop in standing water in swamps, low spots, or containers.</p>
<p>Adults emerge in swarms in spring or summer and live only 3-4 days.</p>	<p>Adult Life</p> <p>Adults emerge from water, females seek a bloodmeal. Most live 2-4 weeks.</p>
 <ul style="list-style-type: none"> - No proboscis - Wings shorter than body. 	<p>Physical Features</p> <ul style="list-style-type: none"> - Proboscis (needle-like mouth) - Wings longer than body 
<p>Non-biting species. May swarm homes near lakes, but pose no health risk.</p>	<p>Risks to Humans</p> <p>Bites cause itchy rash. Can carry diseases like West Nile virus.</p>

You can tell its a mosquito by looking for a proboscis, or feeding tube.

Most flying insects are harmless!



Lastly....What Can You Do?

Follow the District D's of Prevention

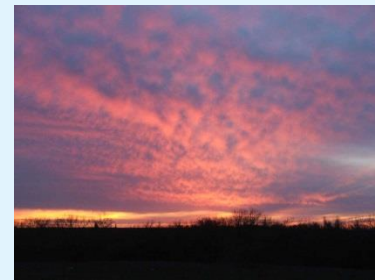
- **DRAIN** Standing Water



Lastly....What Can You Do?

Follow the District D's of Prevention

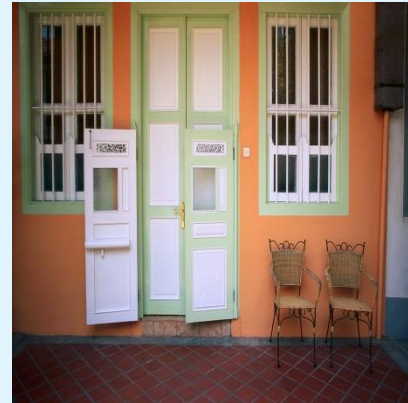
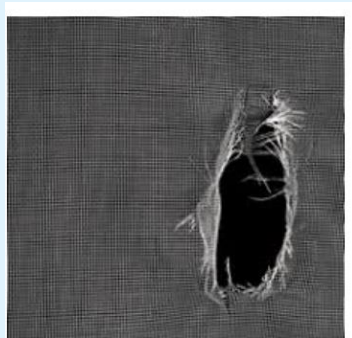
- **DAWN and DUSK** are times to avoid being outside



Lastly....What Can You Do?

Follow the District D's of Prevention

- **DOORS** and windows screens should be in good working condition.



Lastly....What Can You Do?

Follow the District D's of Prevention

- **DRESS** in long sleeves and pants



Lastly....What Can You Do?

Follow the District D's of Prevention

- **DEFEND** yourself with mosquito repellent



Lastly....What Can You Do?

Follow the District D's of Prevention

- **DISTRICT** is here to help



Lastly....What Can You Do?

Follow the District D's of Prevention

- **DRAIN** Standing Water
- **DAWN** and **DUSK** Are Times To Avoid Being Outdoors
- **DRESS** In Long Sleeves & Pants When Outside
- **DEFEND** Yourself With An Effective Repellent
- **DOORS** and Screens Should Be In Good Working Condition
- **DISTRICT** Personnel Are Available To Help



Thank you!



1-800-429-1022

info@fightthebite.net



Sacramento-Yolo
MOSQUITO & VECTOR
CONTROL DISTRICT

www.FIGHTtheBITE.net  